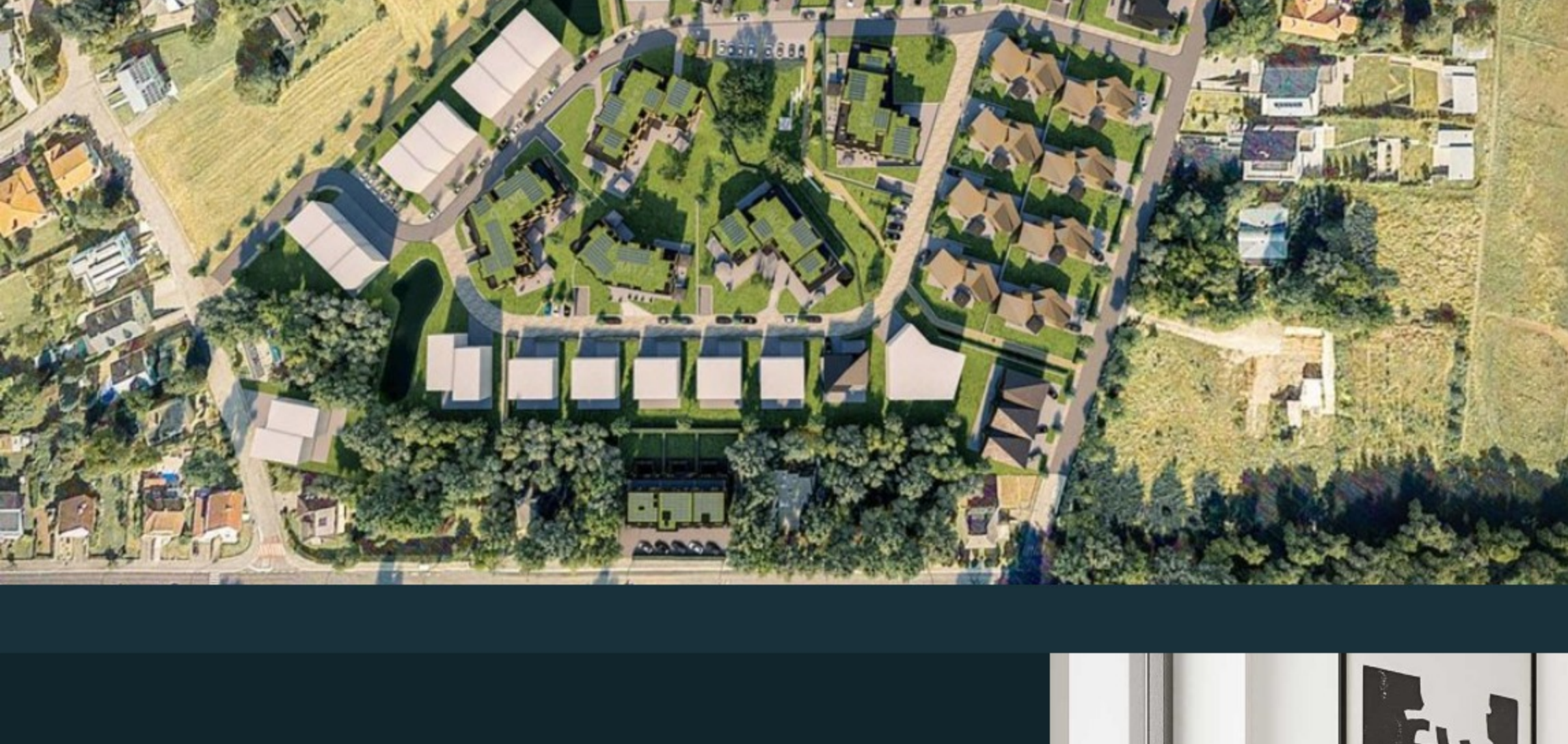


ESPEN

Naturally Urban



ESPEN - residential neighbourhood

An exclusive neighbourhood is being developed in proximity of Luxembourg's capital. Experience the closeness to nature, the charming woods and hills of Moutfort while fully benefiting from the proximity to all amenities. Just a few minutes from the capital, this is the place where nature meets state-of-the-art architecture.

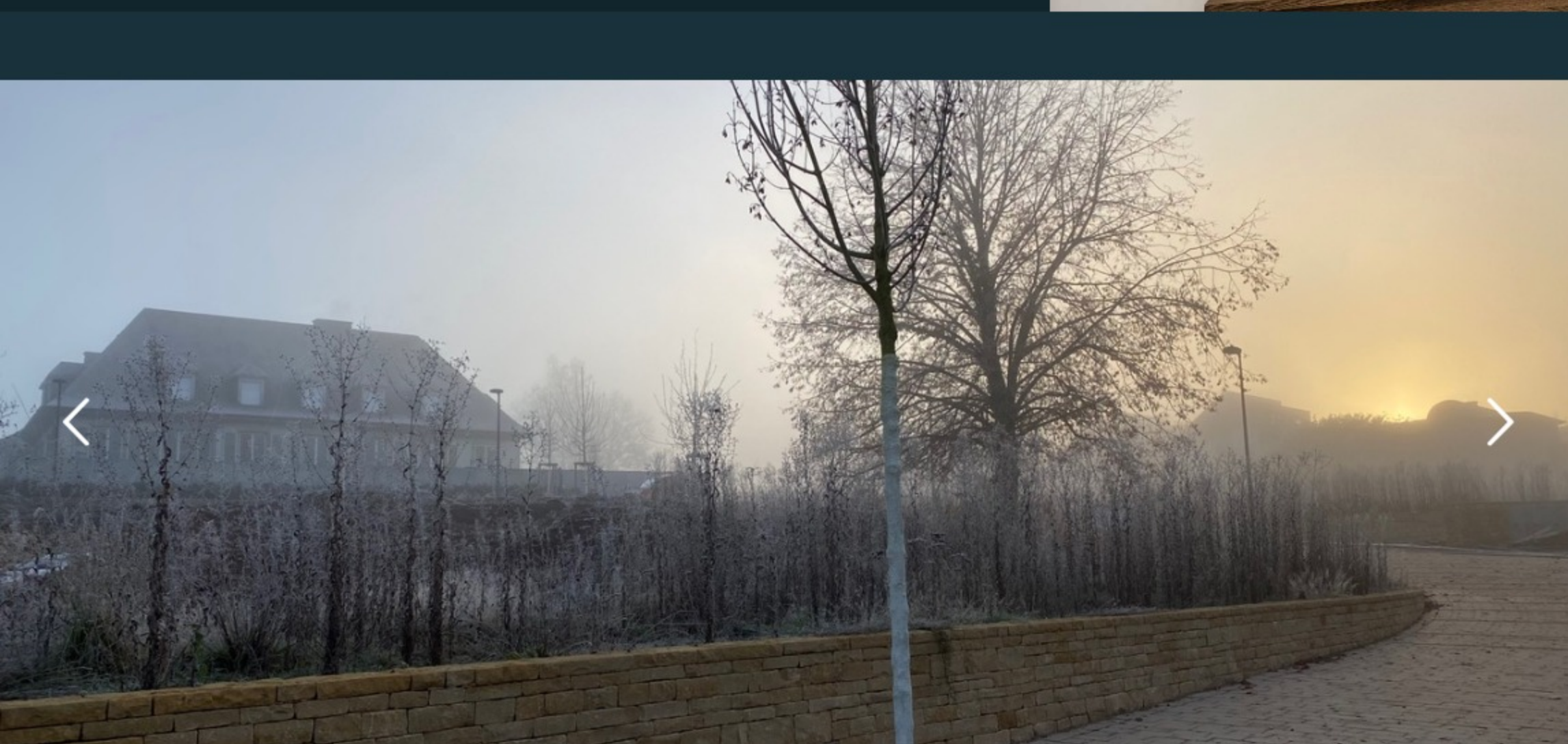
Properties tailored to your lifestyle

The ESPEN project comprises different sizes of properties for every style of living, ranging from stylish single apartments to comfortable senior dwellings to contemporary family homes.



Moutfort where picturesque meets practical

The project is located in the quiet and exclusive commune of Contern, known for its proximity to all relevant infrastructures and only 11km from Kirchberg and Findel Airport.



The new neighbourhood

39 houses

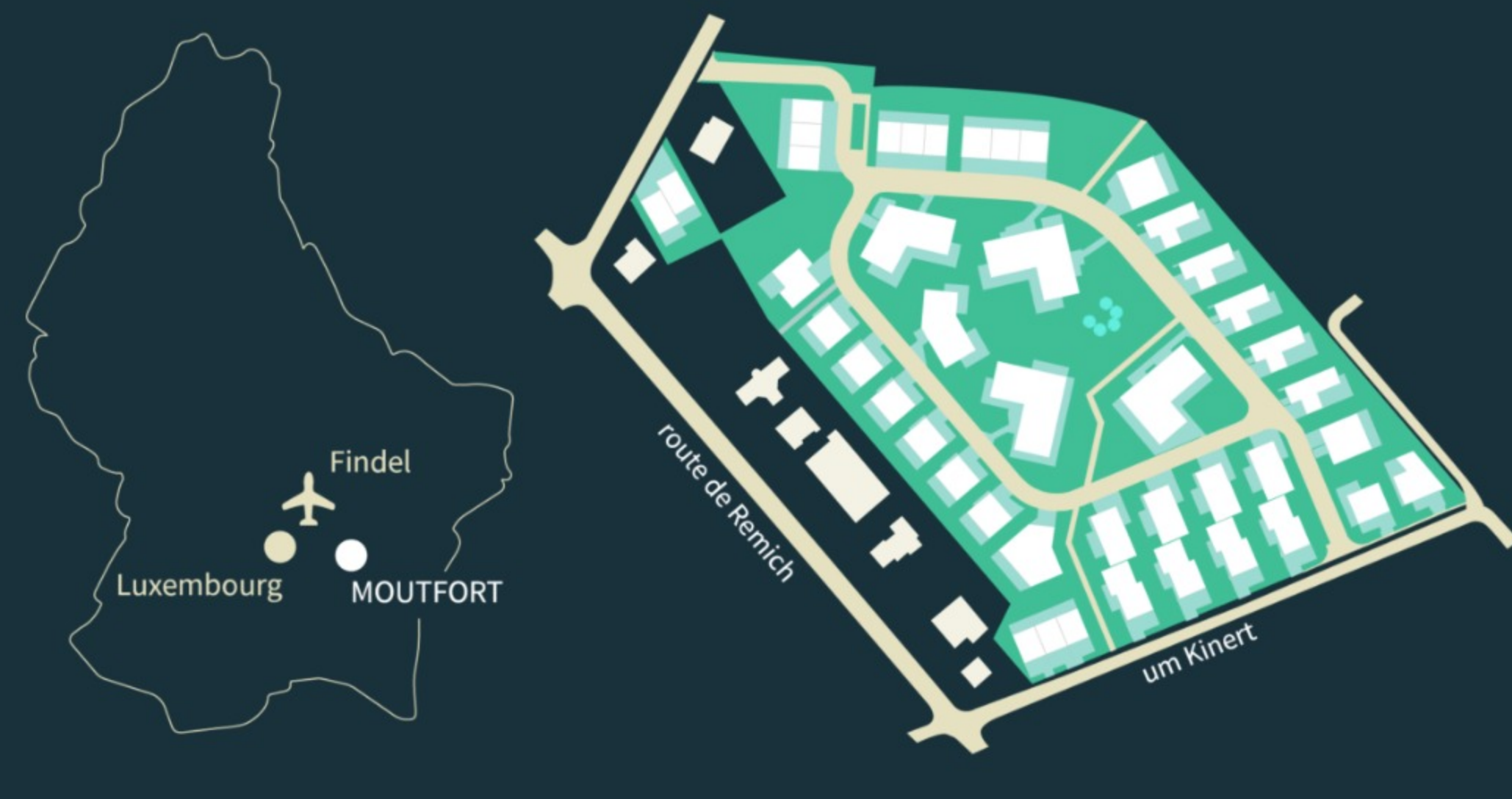
5 apartment buildings

100 to 400 m²

1 to 6 bedrooms

Discover the different lots in the provided PDF below.

ESPEN LOT MAP (4MB)



Properties currently for sale

The modern, very appealing and functional architecture, designed by the renowned architecture firm Jean Petit Architectes S.A. makes this project unique and standing out from the standard model currently in use.



ESP V28

Total surface	380 m ²
Living area	275 m ²
Number of bedrooms	5 + 2 bureaux



ESP T13

Total surface	338 - 392 m ²
Living area	219 - 273 m ²
Number of bedrooms	4 - 6



Lot 8

Total surface	6a 18ca
---------------	---------

Sale in combination with an architect's contract with www.jean-petit.lu

Properties sold



ESP-K1 - K2 - K3

Lots 1, 2, 3

Total surface	244 - 252 m ²
Living area	183 - 190 m ²
Number of bedrooms	5

ESP G1 / G2 / G3

Lots 19, 18, 17

Total surface	331 - 342 m ²
Living area	215 - 222 m ²
Number of bedrooms	4

Get in touch

Please feel free to contact us for any further information, answer any questions you may have and create an effective solution tailored to your needs.

We'd love to hear from you:

LES ERABLES S.A.

An den Espen / rue Simone Veil
L-5334 Moutfort

+352 47 13 22

INFO@ESPEN.LU

We are happy to help

Please fill out the form and we will get back to you as soon as possible.

Together we will find the right offer for you and will be happy to answer any questions you may have.

First name (required)

Surname (required)

Email (required)

Telephone (required)

Do you have any specific questions or preferences?

By sending us your contact details you agree to our [Privacy policy](#)

SEND REQUEST